

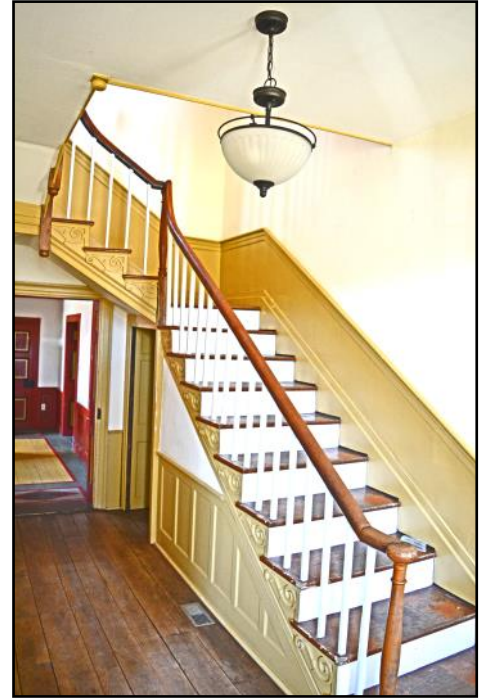


# Delaware County Historian

VOLUME 60, ISSUE 3

WINTER 2016

## Monumental Start to 2016 for Society



By Matt Kear

The year 2016 will no doubt be known as a historic year for the Delaware County Historical Society as it undergoes its greatest transformation since it received the donation of the Nash House back in 1954.

The year begins with the Society welcoming Donna Meyer as its new Executive Director. A longtime trustee, Meyer applied for the position when it was posted in the fall of 2015. A Search Committee consisting of trustees Ana Babiasz, chair, Jan Fleischmann, and Jack Hilborn, reviewed and interviewed several qualified candidates as a part of the search process, and identified Donna as the best fit for the Society.

As the clock turned to 2016, the Society took formal possession of the Meeker

Homestead. The Meeker Homestead was donated to the Society by Tom and Carolyn Porter at the end of 2011. Garth's Auctions, Inc., has leased the property from the Society since that time and will continue to have a presence at the property as they transition to their new location in 2017.

Connie Hoffman was hired by the Society as Venue Manager during the fall of 2015. Connie will be handling all matters related to the Society's special event venue, the Barn at Stratford, including scheduling the use of the Garth Oberlander Barn. In addition to hosting the Society's educational programming, the Barn at Stratford will be available for special events such as weddings and parties.

### New Venue Manager Connie Hoffman and New Executive Director Donna Meyer; Inside the Meeker Home

(Photos by Matt Kear)

#### INSIDE THIS ISSUE:

Donna Meyer	3
Meeker Homestead	4-5
Connie Hoffman	6
Lucy Depp Park	8-9
New Trustee	11
Nash House at Christmas	12-13

## News and Notes

### Newsletter Articles Are Wanted!

We want to publish articles written about Delaware County history in this newsletter.

Send your submission or your questions to [info@delawareohiohistory.org](mailto:info@delawareohiohistory.org)

### Available for Sale at the Library!

*Delaware and Delaware County*  
Logo T-Shirts (newly reengineered!), Tote Bags,  
and Mugs

Books and DVDs about Delaware History  
Old Photographs of Delaware County  
And Many More Items!

### Upcoming Events

February 20-21 Open House at Meeker Homestead  
12-4 pm both days  
2690 Stratford Road, Delaware

April 16 Volunteer Recognition Event at  
Meeker Homestead  
9 am

May 14-15 Delaware Arts Festival,  
Downtown Delaware

And many more to come!

Check our website for more information as it becomes available

## DELAWARE COUNTY HISTORICAL SOCIETY

Established 1947

**Our Mission:** To promote and sustain interest in the history of Delaware County, Ohio, through historic preservation and education.

**Our Vision:** To be a continuing, self-sustaining source of and a repository for historical information and artifacts which fosters lifelong interest in Delaware County history through community engagement, education and historic preservation.

Donna Meyer, Executive Director

### OFFICERS

President	Brent Carson
Vice-President of Development	Jack Hilborn
Vice-President of Operations	Roger Koch
Recording Secretary	Lynn Foreman
Corresponding Secretary	Mary Ann McGreevey
Treasurer	Jan Fleischmann

### TRUSTEES

Charlton Amidon  
Ralph Au  
Ana Maria Babiasz  
Karen Cowan  
Susan Garrett  
Sue Heston  
Matt Kear  
Benny Shoults  
Marian Vance

The Delaware County Historian is published at least biannually by the

Delaware County Historical Society, Inc.  
157 E. William St.  
P.O. Box 317  
Delaware, OH 43015  
740-369-3831

[www.delawareohiohistory.org](http://www.delawareohiohistory.org)  
[info@delawareohiohistory.org](mailto:info@delawareohiohistory.org)



Newsletter Editor: Matt Kear  
Contributions of original historical research concerning Delaware County, Ohio, are welcome.  
Send your contributions to the attention of the Newsletter Editor at any of the above addresses.

# Meyer Takes Charge As Executive Director

By Matt Kear

Donna Meyer has had a busy start in her position as the new Executive Director of the Society. A board member since 2010, Donna officially took the position at the start of 2016 and is very excited to be leading the Society during this eventful time. "I'm so excited about the acquisition of the Meeker property. There are so many people who are excited about the Historical Society," she said.

While on the Board, Donna served as chair of the Communications Committee, led the redesign of the Society's logo and brochures, and created the Society's annual reports, a first for the Society. She is building on these experiences as she settles into her new role.

Since the start of the year, Donna has been familiarizing herself with the many different projects of the Society and the volunteers who have been working on those projects. "I've been meeting with committee members and board members to hear about what they do for the Historical Society and the concerns they have about working with an executive director," she said. "Many of our committees have been doing a great job, especially the Curriculum Committee. We have very dedicated board members and volunteers, all who are passionate about the Historical Society."

Donna sees a number of challenges ahead for the Society. "We need to need to keep up with what the community needs. We also need to focus on increasing our membership and donations to the Society," she said. "The Historical Society is an important part of our legacy as a community. We have very strong community organizations and connections in Delaware, and we need to build on that." She also cited community events as important to the future of the Society. "We need to have events where the community is welcome, and feels a part of it. We've been taking good steps forward by going



**Donna Meyer**

(photo by Matt Kear)

to events throughout the county, and we need to continue having events that are relevant to the community."

She is looking forward to working with other non-profit organizations in Delaware County, and is also reaching out to other area historical societies to learn about what they are doing.

Donna brings a wealth of experience in the Delaware community to the Society. Before taking this position, she worked as the Associate Director of Communications for SourcePoint (formerly the Council for Older Adults). During her time at SourcePoint, that organization grew steadily to serve the growing population of older adults. She has also served on the board of Main Street Delaware, and is active in the Delaware Area Chamber of Commerce and Kiwanis.

Donna has strong ties to the Delaware community. She is a Delaware native who grew up near Oak Grove Cemetery, attended Carlisle Elementary School, and

graduated from Hayes High School. She lives on a farm in Radnor Township with her husband, Mark. She has four sons from a previous marriage and eight grandchildren. She is an avid genealogist and can trace her family's roots in Delaware County back to 1812, when her ancestors settled in the Harlem Township and Berkshire areas. Her husband's family also has deep roots in Radnor Township.

Her interest in the past was sparked when she attended Eastern New Mexico University, studying anthropology and archeology. She worked on several archeology digs throughout the western United States and on the dig at the Myers Inn in Sunbury.

Her experiences to this point have certainly equipped her to take on the challenges facing the Society. "We're not just a sleepy little historical society anymore," Donna said. "There's a lots of possibilities now that we have an executive director."



# Society Takes Possession of Meeker Homestead



The Society will celebrate the official opening of the Meeker Homestead and The Barn at Stratford with a two-day open house from noon to 4 p.m. Saturday, Feb. 20, and Sunday, Feb. 21.

The event is free and open to the public. Refreshments will be served.

There will be guided tours of the Meeker House, constructed ca. 1823, and the Garth Oberlander Barn, a stone-end bank barn constructed ca. 1848. Board members and other volunteers will be on hand to answer questions about the history of the Meeker Homestead and the future plans for the Society.

We hope to see you there!

**Above: Front of Meeker House; Right: Office entrance door at south side of house; Below: New parking sign**

(photos by Matt Kear)





## Open House to Be Held Feb. 20-21



**Above: South first floor room in the house; Below: North first floor room**  
(photos by Matt Kear)



## Connie Hoffman to Manage Barn at Stratford

By Matt Kear

Since being named the Society's Venue Manager in the fall of 2015, Connie Hoffman has been busy with every aspect of the new venue business. The Society has created a special events venue known as the Barn at Stratford, which will make the Society's Garth Oberlander Barn available for use for weddings, meetings, celebrations, and other special events. The Barn will also be used by the Society for educational programming.

"There has been a lot of interest in the Barn, and I've been fielding 25-40 emails and phone calls each day," Connie said. Interest was strong even before the formal launch of the venue's website and the creation of the promotional materials. Connie and Executive Director Donna Meyer, with the assistance of a graphic artist, created the brochures promoting the Barn. They were joined by a team of Society volunteers to create the website. Connie also promoted the Barn at Stratford through a booth at the *Columbus Weddings Show* at the Columbus Convention Center. "As a result of the bridal show, we have brides and grooms showing interest in the Barn for events in 2016 and 2017," Connie said.

Connie brings a strong event-planning background and interest in history to the job. She has been a business owner both in her own right and with her husband, Mike. She has planned events at the Delaware County Fair and Celebrate Delaware, and has been an active part of the organization of the Delaware Arts Festival. She has been friends with the Porter family, the donors of the Meeker Homestead, and has also worked for the Jeffers family as a part of Garth's Auctions, Inc.

She first became interested in the potential of the Barn at Stratford in a meeting with Society President Brent Carson that took place shortly after the proper-



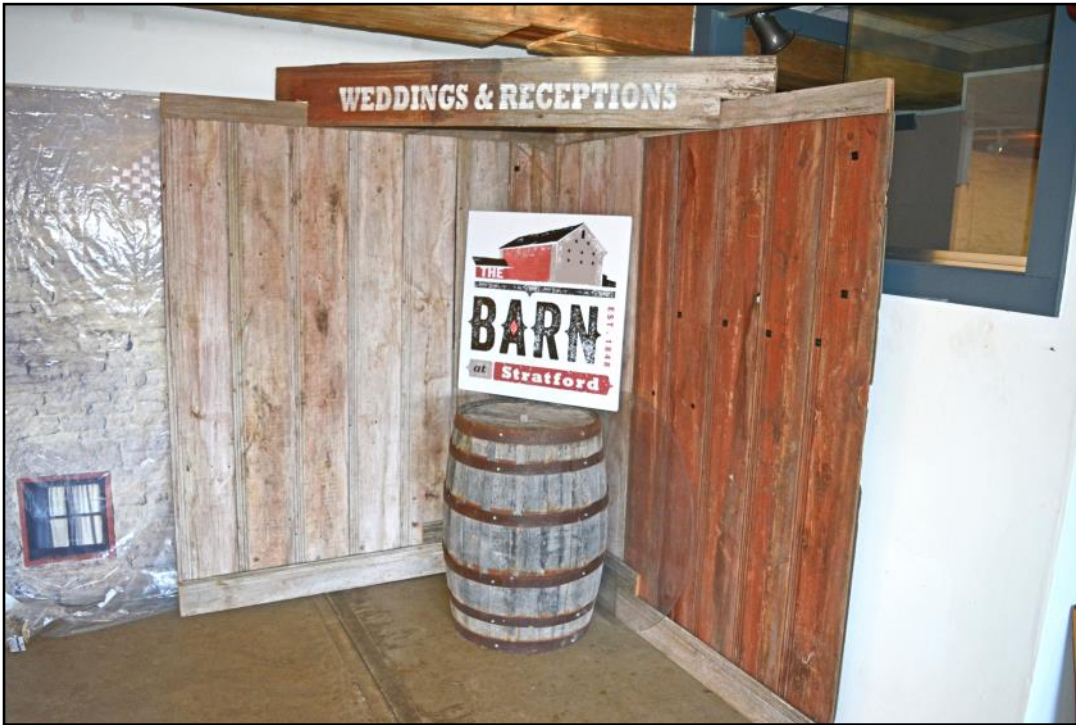
Connie Hoffman at the recent *Columbus Weddings* bridal show

(photo by Mike Hoffman)

ty was gifted to the Society. "I asked him what the plans for the property were, and he mentioned the possibility of having a special events venue there. I was immediately interested," she said.

Connie is a Delaware native, born and raised, and is a graduate of Hayes High School. She attended the Columbus College of Art and Design for a short time, and has a background in the arts, primarily watercolors. She and Mike live in Radnor Township. They have three children and six grandchildren. Her family has deep roots in Radnor Township and in the City of Delaware. She is very excited about the possibilities of the Barn at Stratford and how it can assist the Society in carrying out its mission.





**Above: Display featuring new Barn at Stratford venue;  
Below: Interior of lower level of the barn.**

(photos by Matt Kear)



# Marker Dedicated at Lucy Depp Park

An historic plaque was dedicated last September 7th in recognition of the Lucy Depp Park and the Depp Settlement. The day was celebrated with a picnic and entertainment, followed by the plaque dedication. Over 200 attended the afternoon festivities. Members of the Lucy Depp Community, the Ohio History Connection, the Concord Township Trustees, and the Delaware County Historical Society were present for the unveiling of the plaque.

The Depp Settlement in Concord Township began with Abraham Depp, an emancipated African American and early pioneer from Powhatan County, Virginia. Abraham Depp's daughter, Lucy, inherited the land when her father died. Lucy Depp's nephew purchased the land and developed it as Lucy Depp Park in the 1920s. Before the days of the Civil Rights Movement of the 1950s and 1960s, the development became a popular resort and home site for African-American families.

**Below and Opposite Page: Dedication of Lucy Depp Park Marker; Lucy Depp Park; the Marker**

(photos by Brad Cowan)









## Annual Meeting Features Langford Talk

The Delaware County Historical Society held its 2015 annual meeting in the historic Garth Oberlander Barn on Thursday, November 12.

Reg Langford presented a program on the search for Fort Morrow, a fort built by the U.S. Army during the War of 1812. The fort was located near the present-day Delaware Lake. Mr. Langford, a longtime employee of the Ohio Department of Natural Resources, searched for the fort after he was assigned to the Delaware State Park in the 1970s. He told the story of the search and the archeology work done at the fort to show if it the site was in fact Fort Morrow. All in attendance learned a great deal about the fort, the search, and everyone who was involved with the search process.

The Society also unveiled the logo for the new special events venue, the Barn at Stratford.

The business portion of meeting included the election of trustees. Incumbent trustees Charlton Amidon, Brent Carson, Roger Koch, Donna Meyer, and Ana Babiasz were elected to new three-year terms. Susan Garrett agreed to join the Board and was elected to a three-year term. Fol-



**Above and Below: Reg Langford presents his program, "The Discovery of Fort Morrow"**

(photos by Matt Kear)

lowing the meeting, Lynn Foreman was appointed by the Board to fill the position vacated by Donna Meyer, new Society Executive Director.

The Board elected the Society's Officers at its first meeting of 2016. All of the officers were re-elected to their positions: Brent Carson, President; Jack Hilborn, Vice-President

of Development; Roger Koch, Vice-President of Operations; Jan Fleischmann, Treasurer; Mary Ann McGreevey, Corresponding Secretary; and Lynn Foreman, Recording Secretary. Mary Ann McGreevey and Matt Kear were elected to serve as Trustees-at-Large on the Executive Committee.





## Susan Garrett Is Newest Society Trustee

Susan Garrett is the newest member of our Delaware County Historical Society Board of Trustees. She said that she wanted to be on the Board because she “loves history” and “loves learning.”

She has been a member of the Society for several years. She said that Delaware County is “so fortunate to have the Delaware County Historical Society so accessible to Delaware County citizens. There is so much here at DCHS, you just choose your area of interest and you can do tons of research on it.” She also said that “the Library at Cryder holds so much knowledge about Delaware County. People don’t realize what we have here.”

Susan has been a resident of Delaware for over 10 years. She and her husband, Larry Garrett, own MailPro1 in Delaware, where Susan oversees billing, payroll, hiring, and similar areas.

Community and church are very important to Susan. She has been involved for years and is a leader in the Feed Delaware Program, which is a food pantry that is open to Delaware residents twice a month.

Recently she has become involved with prison ministry. She goes to Delaware County Jail weekly and conducts Bible study and prayer sessions for those prisoners who want to attend. She indicated that the number of prisoners taking advantage of this program gets larger each week.

Susan is also a Master Gardener, class of 2011, and volunteers for the Central Ohio Symphony Orchestra.



Susan Garrett

## Report from Library and Collection Committees

The Society’s mission is to *promote and sustain interest in the history of Delaware County, Ohio through historical preservation and education*. Our collections are built with donations from generous individuals. We are interested in historical records, photographs, and interesting objects of organizations, businesses, events and Delaware County families. As we plan for the Meeker Homestead Museum, which will feature early Delaware, we are very interested in donations of items that were in Delaware County before 1850.

We also accept loans of early photographs which were taken in Delaware County and/or are of notable Delaware County individuals. We create high resolution digital images of these for our collection. The loaned photographs are returned to the donor along with a copy of the digital image.

In 2015, we received a grant through Ohio History Connection to microfilm the issues of the *Delaware Gazette* that were published from April 1933 through February 1936. This project was completed

in cooperation with the Delaware County District Library. This project was developed during an activity to plan for a disaster. As we discussed the potential impacts of a disaster, we realized that the only copy of these years of the *Gazette* was held at the Historical Society. We determined it was important to have another copy at the District Library in case our collection was destroyed.

We also received a generous donation from Society members to support the re-boxing of the Society’s unbound newspapers, 1820 through 1900s, from acidic containers into acid-neutral boxes. The acidic cardboard has been increasing the deterioration of the newspapers.

This past year our volunteer staff cataloged nearly 2,000 items, which brings the total number of cataloged items to 8,284. Most of the items cataloged in 2015 were objects, such as clothing and accessories, business advertising, and furniture.

-Susan Logan

## Holiday Open House Held at Nash House







**The Society held an open house at the Nash House on December 12 and 13. The House was decorated for Christmas by curator Maggie Webb.**

(photos opposite and this page by Matt Kear)



## Letter Recalls Civil War Times in Rural Delaware County

Emily Elliott, age 16, lived on her parents' farm just south of Lewis Center Road on what we now call Old State Road. During the winter of 1863 she wrote to her half-sister, Julia Jeanette Elliott, who was born in Worthington in 1836, but moved to Connecticut in the 1850s to live with relatives. Julia's daughter returned the letter to Ohio in 1910. Words in ( ) have been added.

- Susan Bauer

February th 22 (1863)

Lewis Center, Del(aware) County

Dear sister

As I have a few leisure moments to spend I will improve them by writing to you. We are all well but Mother (Margaret Smith Williams Elliott). She fell and hurt her back a few weeks ago but she is getting better now. As I have bad news to tell you, Mr. (Ebenezer) Thompson is dead. He died two weeks ago tonight at eleven o'clock and was buried on Tuesday. Mother and (brother) Lucius and (sister) Maria and I were at the funeral. There were quite a good many there.

I suppose you have not heard that Ana H. had got a pair of twins, a boy and a girl. Milton is left quite alone now. Martha E. stays there, but she talks of leaving there. Perhaps if you were here there might be a chance for you to hire out. You wanted to know who the Nettleton's girls married. One married a Johnson, the other an Everett. They both live in Sandusky.

Last night there fell about eleven inches of snow. Our school was out this week. A Friday Maria received a letter Sam (?) had two weeks ago. He is at Vicksburg. Cicero Conklin (96<sup>th</sup> OVI) is dead and they have gone after his body. Maria has not had any chance to cut any dress yet. The folks are getting so

poor down here that they can't buy even a calico dress. Mrs. Platt has not gone home yet. She is up to Gambier now. I should like to have been up there and studied with you. We would have had a pleasant time. I wrote a letter to Amelia (the) other night. Emma (Adams Elliott) is writing a letter to Milo (Adams, Emma's brother). I believe I have no more news to tell you. Mother says you must write and tell us how you get along a skating. As (sister) Eveline wants to write a few lines so I must close for this time. So good bye from your affectionate sister.

Emily J Elliott

P.S. We had company Tuesday afternoon. Mrs. Kelly, Mrs. Dickerson and Mrs. Knight and Mrs. Speer (all neighbors) and we had a very pleasant time.

Miss Case has not had any chance to put a piece of flannel in with anybody this winter so she gave me a dollar to send to you. She says she will try and make some in the spring if she can have a chance to and if she don't why she will send you the money. Maria received that dollar that you sent.

(Eveline Elliott)

"Dearest Julia"

You will wonder who is writing to you. I wish you could be here. O! how much I miss you. If you could see the baby (Edwin, son of Lucius and Emma) you would think him worth more than 5 cents. Dear girl I hope you will come down this summer and bring your Aunt & Uncle too.

Good morning, your sincerely, your friend  
Delia Lewis Adams (mother of Emma)

*Thank You Volunteers, Members  
and Donors for your continued  
support of the Delaware County  
Historical Society!*

*Special Thanks to New Business  
Member  
Frame Artistry*

### SHOP & DONATE!

When you shop at the Delaware County Community Market, 20% of your purchase goes to the charity of your choice. Why not select us? Then, every time you shop, you will automatically be supporting our mission. Simply stop by the store at 222 E. William St. and register (it's free) and choose us as your charity of choice. The Market features many products that are made by local vendors.

The  
Delaware County  
Community Market

*The Market carries:  
produce, baked goods, soups,  
sandwiches, breads, ribs, pies,  
jams, jellies, sauces, honey,  
eggs, soaps, lotions, candles,  
framed artwork, cards, jewelry,  
bird food, socks, wreaths, knit  
goods & more!  
The Market can cater, too!*

The Delaware County Community Market  
222 E. William St., Delaware (near the liquor drive thru)  
740-610-0091 or www.dccmc.com



## *More Ways To Help The Society*

### Sign Up or Renew Your Kroger Community Rewards

By Marian Vance

Just by shopping at Kroger you can send fundraising dollars to the Delaware County Historical Society. It's easy – all you have to do is sign up. If you are already a Kroger participant, it's time to renew your participation. Signing up can be done at any time but reenrollment is needed every year in April.

Go to the Kroger website ([www.Kroger.com](http://www.Kroger.com)) and sign in or register if this is your initial visit. Go to "my account" then scroll down the page and follow the guidelines for Community Rewards. The DCHS organizational number is 84793. You then click "Enroll" or "ReEnroll" to continue. Enter the organizational number in the box and click "search." You are almost done – fill in the circle beside the Society name and click "Enroll."

That should do it and the Society will be the lucky receiver of your shopping bonus – at no extra cost to you.



### About AmazonSmile

#### What is AmazonSmile?

AmazonSmile is a simple and automatic way for you to support your favorite charitable organization every time you shop, at no cost to you. When you shop at [smile.amazon.com](http://smile.amazon.com), you'll find the exact same low prices, vast selection and convenient shopping experience as Amazon.com, with the added bonus that Amazon will donate a portion of the purchase price to your favorite charitable organization. You can choose from nearly one million organizations to support.

#### How do I shop at AmazonSmile?

To shop at AmazonSmile simply go to [smile.amazon.com](http://smile.amazon.com) from the web browser on your computer or mobile device. You may also want to add a bookmark to [smile.amazon.com](http://smile.amazon.com) to make it even easier to return and start your shopping at AmazonSmile.

#### Which products on AmazonSmile are eligible for charitable donations?

Tens of millions of products on AmazonSmile are eligible for donations. You will see eligible products marked "Eligible for AmazonSmile donation" on their product detail pages. Recurring Subscribe-and-Save purchases and subscription renewals are not currently eligible.

#### Can I use my existing Amazon.com account on AmazonSmile?

Yes, you use the same account on Amazon.com and AmazonSmile. Your shopping cart, Wish List, wedding or baby registry, and other account settings are also the same.

#### How do I select a charitable organization to support when shopping on AmazonSmile?

On your first visit to AmazonSmile ([smile.amazon.com](http://smile.amazon.com)), you need to select a charitable organization to receive donations from eligible purchases before you begin shopping. Amazon will remember your selection, and then every eligible purchase you make at [smile.amazon.com](http://smile.amazon.com) will result in a donation.

### Volunteers and Committee Members Are Needed

We need your help. The Society is driven and energized by its volunteers, and there are always areas where we need help. There are more than two dozen ways you can help the Society by volunteering your time and talents. Many of our committees are also seeking members.

To find out how you can help, contact Susan Logan at [volunteer@delawareohiohistory.org](mailto:volunteer@delawareohiohistory.org).

Committees for 2016 and their chairs are as follows:

Buildings and Grounds	Roger Koch
Education	Susan Logan
Library Subcommittee	Susan Logan
Museums & Exhibits Subcommittee	Benny Shoults
Programs Subcommittee	<i>Volunteer needed</i>
Collections Subcommittee	Susan Logan
Curriculum Support Subcommittee	Karen Hildebrand
Communications	Lynn Foreman
Information Technology	Ralph Au and Rick Fisher
Membership	Karen Cowan
Finance and Budget	Jan Fleischmann
Resource Creation	Marian Vance

Delaware County  
Historical Society

157 E. William St.  
P.O. Box 317  
Delaware, OH 43015

Phone: 740-369-3831  
Email: info@delawareohiohistory.org  
www.delawareohiohistory.org

NONPROFIT ORG  
US POSTAGE  
PAID  
DELAWARE OH  
MAILPRO1

Return Service Requested

*Our History,  
Our Heritage*

Find us on  
Facebook!



**DCHS MEMBERSHIP FORM**

All memberships are "per-person" amounts, including life memberships.

Circle one:  
New or Renewal

Name: \_\_\_\_\_

Address: \_\_\_\_\_ Phone: \_\_\_\_\_

City, State, Zip: \_\_\_\_\_ Email: \_\_\_\_\_

**Membership Type**

- |                                 |         |       |                          |                |
|---------------------------------|---------|-------|--------------------------|----------------|
| Number                          |         |       |                          |                |
| ( ) Adult Membership            | \$20.00 | _____ | Business/Corporation     | \$ 50.00       |
| ( ) Senior Membership (60+ yrs) | \$15.00 | _____ | Life Membership (Joint)  | \$500.00 _____ |
| ( ) Student Membership          | \$5.00  | _____ | Life Membership (Single) | \$300.00 _____ |

Newsletter preference (circle): Printed E-mail Both

For Student Membership, name of your school: \_\_\_\_\_

In addition to your membership noted above, please consider an additional gift to the Society:

\$100.00 \_\_\_\_\_ \$250.00 \_\_\_\_\_ \$500.00 \_\_\_\_\_ \$1,000.00 \_\_\_\_\_ Other \_\_\_\_\_

Special Gift of \$ \_\_\_\_\_ For/In Honor or Memory of \_\_\_\_\_

Amount Enclosed: \$ \_\_\_\_\_

Make check payable to Delaware County Historical Society and mail to P.O. Box 317, Delaware OH 43015