



Delaware County Historian

VOLUME 58, ISSUE 1
SPRING/SUMMER 2013



The cast of *Hello Dolly* at the home of Bob and Holly Gerspacher

(photo courtesy Scott Cubberly)

Society, Hayes High School Team Up for *Hello Dolly*

By Brent Carson

Delaware Hayes High School and DCHS combined their efforts in this year's production of *Hello Dolly*. The Hayes Drama Department asked the Society to assist in providing a hometown touch to the Victorian-era musical and DCHS delivered. The advertising poster and program featured a scene of Delaware women dressed in their finery for an outing. That picture and numerous other pictures from DCHS archives were used.

Outside the auditorium, the Society provided an extensive display of artifacts

depicting Delaware in the days of *Hello Dolly*. The Society also assisted in arranging locations for cast pictures to be taken. The students loaded onto buses and spent a Saturday morning traveling to Victorian-era homes in Delaware. Most of these homes belonged to Society members. Thank you to Maggie Webb, Sean Gulyas, Susan Logan, Sandy Wicker, Benny Shoults, and Brent Carson for their assistance. Also, thank you to the Amidons, the Gerspachers, and the Prengamans for welcoming the students for the cast pictures at their homes.

INSIDE THIS ISSUE:

OWU Intern	2
Clifton Wiles	3
Biggest Cattle Ranch	5
Flood Programs	6-7
Committee Reports	8-9
News and Notes	11

DCHS, OWU Create Internship Program; Anne Frissora Is First Intern

From late January to early May of this year, the Delaware County Historical Society provided an internship experience to an Ohio Wesleyan University student, Anne Frissora. She is a junior history major with minors in Spanish and Latin American Studies. She worked under the supervision of Susan Logan, volunteer coordinator, and Matt Kear, a member of the Society's Board of Trustees.

As an intern, Anne performed a variety of duties and tasks for the Society. Mainly, she wrote articles for the Featured Item column in the newsletter. Anne also wrote larger articles on events in Delaware history, such as the Cattle Ranch during the Great Depression and the Central States Water Works Association, both of which appear in this issue. She also edited a piece about the Delaware County Independent Newspaper. Apart from writing for the newsletter, Anne also did a great deal of

research on artifacts in the Society's Library and the Nash House.

According to Anne, she has enjoyed her time interning at the Society and feels that she has gained essential experience and knowledge. "It is important as a history major to know how to approach primary sources and artifacts in order to learn from them," she says. "You need to be able to research, not just pull information from history books. That is what makes being a history major exciting." Anne says that the Society has helped her with just that. She is the first OWU student to intern with the Society, and by working six hours a week, she was able to gain an academic credit toward her history degree.

Anne is the first of what will hopefully be many interns from OWU working for the Society as part of an informal partnership between the OWU Department of History and the Society.



Anne Frissora

DELAWARE COUNTY HISTORICAL SOCIETY

Established 1947

OFFICERS

President	Brent Carson
Vice-President of Development	Jack Hilborn
Vice-President of Operations	Roger Koch
Recording Secretary	Steve Shaw
Corresponding Secretary	T.K. Cellar
Treasurer	Jan Fleischmann

TRUSTEES

Charlton Amidon
Lynn Foreman
Bob Gerspacher
Sue Heston
Matt Kear
Donna Meyer
Bonnie Newland
Bill Rietz
Benny Shoults
Doug Wilson
Louis Foster (Emeritus)



The Delaware County Historian is published at least biannually by the Delaware County Historical Society, Inc.

157 E. William St.

P.O. Box 317

Delaware, OH 43015

740-369-3831

www.delawareohiohistory.org

Newsletter Editor: Matt Kear

Contributions of original historical research concerning Delaware County, Ohio, are welcome.

Send your contributions to the attention of the Newsletter Editor at any of the above addresses.

Clifton W. Wiles: Civil War Veteran and Waterworks Association Organizer

By Anne Frissora

Clifton W. Wiles came from central New York to Delaware, Ohio, in 1892 to accept the position of Superintendent and General Manager of the Delaware Water Company. By 1898, Wiles helped to create the Central States Water Works Association, known today as the Ohio Section of the American Water Works Association.

Wiles was born in the town of Freetown, New York, on March 26, 1843. His family descended from German immigrants who came to the central New York area around 1800. Wiles lived on a farm with his family and attended the local school. He was a schoolteacher for one year before he enlisted in the Union Army on September 20, 1862, during the heart of the Civil War. His regiment was discharged in 1865 and he returned home to complete schooling at New York Central College. After college, Wiles became involved in construction and engineering associated with waterworks. His position as the Superintendent and General Manager of the Delaware Water Company would be the one he retained for the remainder of his life.

Upon arriving in Delaware, Wiles became interested in forming an association of Ohio water

works. In November 1897, he expressed this idea to all of the waterworks in Ohio and received positive feedback. After guiding an organizational meeting in February of the following year, the Central States Water Works Association was born. Wiles first served as the First Vice Chair, and was then elected to be the President of the Association for 1899-1900. Wiles was well-respected among waterworks professionals and was often called upon to inspect and report on the condition of waterworks in other cities throughout the country.

Wiles was active in several other organizations during his time in Delaware. In 1894 he was commissioned by Governor William McKinley as a battalion adjutant in the Fourteenth Ohio National Guard, and in 1897 by Governor Asa Bushnell as captain and inspector of rifle practice, in the same regiment. He held this rank at the beginning of the Spanish-American War. With his regiment, he prepared for active service at Camp Bushnell, although its service was never used. Wiles was a member of the Hiram Lodge, No. 18, having been demitted to this lodge from Marathon Lodge, No. 438, of Cortland County, New York, where he was made a Mason



Clifton W. Wiles

(photo from DCHS Collection)

in 1866. He also belonged to the Chapter and Commandery in Cortland, New York, and to Cortland Commandery No. 50, joining the chapter in Delaware about the same time that he was transferred by demits. His Masonic affiliations included membership to Aladdin Temple and Mystic Shrine in Columbus. He was a member of George B. Torrence Post, G. A. R., and was a commander of Grover Post of Cortland as well as a commander of the post in Delaware. He was also a colonel of the Union Veteran Legion in Delaware for six years.

He married Anna Bates of Cortland, New York, on February 17, 1869. Their first child, Nellie, was born in 1876 and their youngest, Arthur, was born in 1884. According to the 1920 Federal Census, Wiles was still listed as the Superintendent and General Manager of the Water Company. He passed away on July 30, 1923, at age eighty.

Help Preserve Our Historical Legacy

Gifts and bequests have played an important role in the preservation of Delaware County history. The Delaware County Historical Society is a tax-exempt 501(c)(3) organization.

Planning now may make your gift more meaningful and reduce taxes on your estate. Please consider the Delaware County Historical Society when making your estate plans.

Society Commemorates War Of 1812 During Flag Day Ceremony

By Brent Carson

Flag Day was June 14 and DCHS used the occasion to recognize Delaware's role in the War of 1812. William Henry Harrison's army encamped near Henry Street and the pioneer tavern during the war, making the spot an important location in the war effort. General Harrison made Delaware his headquarters in the winter of 1813. One hundred years later, the Daughters of the American Revolution honored the location by placing a large boulder with an historic marker.

To honor the 200th anniversary, the Society placed a wreath at the marker site during the ceremony. The Sweet Adelines performed some patriotic songs, a Boy Scout troop presented the Colors, and "Taps" was played.

Following the twenty-minute ceremony, the crowd adjourned to the Garth Oberlander Barn, a part of the Meeker Homestead, for a program on the War of 1812. The speaker was Lou Schultz, a noted War of 1812 historian. Mr. Schultz



The wreath and marker stone, located near Selby Stadium

(photo by Matt Kear)

spoke on the topic of the War of 1812 in Ohio, with particular focus on the role of Delaware and Delaware County residents in the war

effort.

Special thanks to Bill Rietz and T.K. Cellar for securing our speaker.

Society Seeks Farm Scene Photos For Fair

The Delaware County Historical Society plans to feature pictures of Delaware County farm scenes at the 2013 Delaware County Fair. Residents with a picture or pictures showing local farm scenes, particularly scenes of early farming, are encouraged to share them with the DCHS and county fair visitors.

DCHS members have prepared a flier that explains the society's plans and includes a form that photograph owners can complete to describe their pictures. The fliers are available at the Cryder Historical Center, 157 E. William St., Delaware. To request a flier, call 740-369-3831 or e-mail info@delawareohiohistory.org and one will be sent by e-mail or U.S. mail.

The DCHS also is interested in adding digital copies of these pictures to the Society's digital photo collection. In order to complete the process in as

timely a fashion as possible, DCHS volunteers would like to receive original photos as soon as possible. Copies of the original photos will be used for the fair exhibit, along with information provided by the donor.

When DCHS volunteers digitize photos for archival purposes, they use the TIF format and scan a 4-inch by 6-inch photo using 600 dpi (dots per inch) resolution. Other resolutions are used for different size photos. These digital files are generally too large to send as attachments to an e-mail message. Pictures may be mailed to P.O. Box 317, Delaware, Ohio 43015 or dropped off at the Cryder Center. DCHS members also will pick up and return pictures personally. Contact the society via e-mail or telephone for more information or to make photo-lending arrangements.

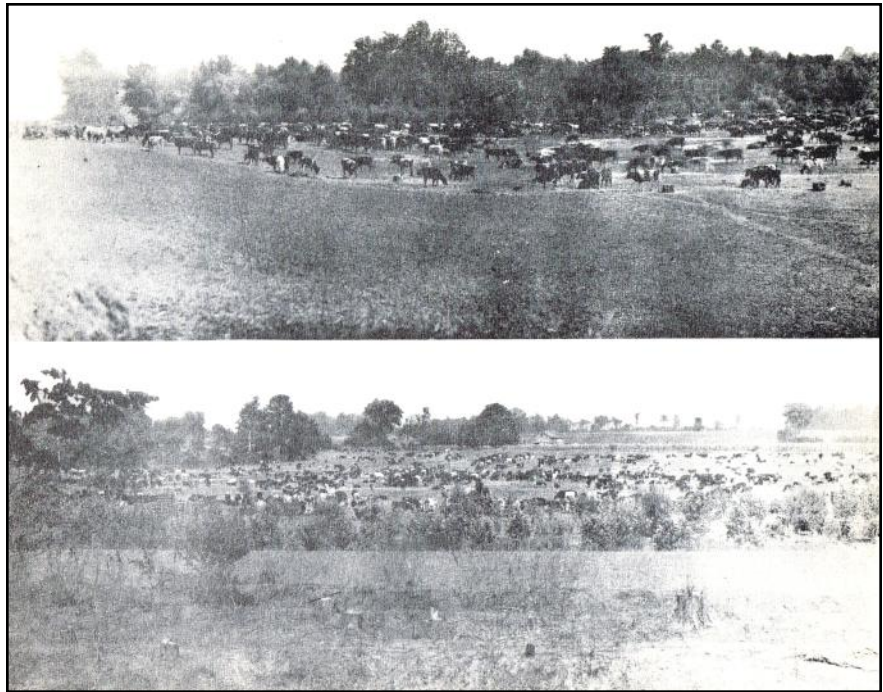
Biggest Cattle Ranch East Of The Mississippi

By Anne Frissora

As part of a drought relief fund put in place by the government in May 1934, Delaware County was home to over one hundred fifty thousand cattle over the course of a year at a ranch located a mile from the Delaware Water Company along the Olentangy River. The ranch was created by the Ohio Relief Commission and the Federal Surplus Commodities Corporation in order to help out Western states that were experiencing an extreme drought at the time, as well as the economic downturn of the Great Depression. The cattle were sent to a packing plant in Marion, where they were butchered and canned for winter food supplies for the needy.

By July of 1934, over 5,000 cattle had been unloaded at the range in Delaware. All of these cattle came from Montana, the Dakotas, Iowa, Oklahoma and Texas. In several articles from August issues of the *Delaware Gazette*, the cattle from Texas were referred to as “the famous Texas ‘longhorns,’” which excited the residents of Delaware County. Many of the cattle that were arriving were in poor condition due to the severe drought taking place in the West. By August of 1934, over 10,000 head of cattle were located at the range. The cattle consumed over one hundred fifty tons of hay per day. When ready, they were sent to the slaughter house in Alliance, Ohio, where they were butchered and their meat was canned to be sent to state relief commission factories in Cleveland, Columbus, Cincinnati and Toledo.

The cattle ranch in Delaware positively affected the community. In August of 1934, the Chamber of Commerce commented that the range had contributed direct and indirect benefits to Delaware County. Business had increased in



Cattle at the Great Depression-era Ranch

(photos from DCHS Archives)

the area as a direct result of the ranch. The feeding of the cattle required thousands of tons of hay and soybeans, which created a mild boom for the farmers who supplied these products – a great relief from the poor economy in Central Ohio due to the Great Depression. The cattle ranch also increased employment by creating jobs – two hundred and forty men on the day force, and ninety on the night force, as well as several other positions. The ranch also was a big tourist attraction in the Central Ohio area. On days when the large shipments of cattle arrived, traffic jams coming from all directions were present.

On November 3, 1934, a supervisor of the cattle ranch, Ben Vin-

cent, denied reports that the cattle ranch was being abandoned. However, on November 7, 1934, it was announced that the range was in fact being abandoned and demolished within the next thirty days. At the time, the ranch had about eight thousand head, which were shipped to packing houses to provide meat to the state relief commission to be distributed to needy families on relief. Although the ranch was only in existence for a few months, it was a huge accomplishment for Delaware, as it was the largest cattle ranch located east of the Mississippi River. It also helped to provide relief to those who were suffering during the years of the Great Depression.

Flood Programs Attract Community Attention



Above: Ben O'Dell (left) being introduced by Brent Carson

Below left: Brent Carson speaking at the March Program

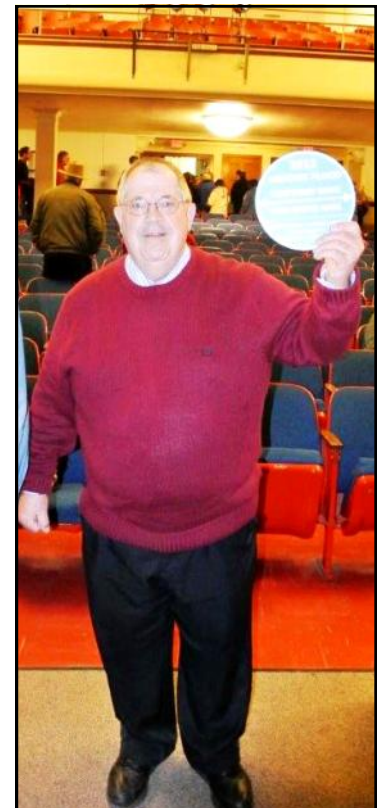
Below right: Brent Carson with a High Water Mark sign

(photos by John Foreman)

By Matt Kear

The Delaware County Historical Society conducted several programs related to the centennial anniversary of the 1913 flood through March and April of this year. On March 25, the Society hosted a program in the auditorium of Willis Intermediate School, and this program was free and open to the public. Brent Carson, Society president, discussed the events and the effects of the 1913 flood, and also presented videos of interviews conducted 25 years ago of some survivors of the flood.

Also at the program, Ben O'Dell of the Army Corps of Engineers generally discussed flood prevention measures taken in the aftermath of the 1913 Flood, including the construction of the Delaware Dam. O'Dell also spoke





about the role that the dam plays in flood prevention throughout the Ohio River valley. Between 200 and 300 people attended this event.

Carson also spoke to students in the 5th and 6th grades at Willis on March 22 and a group of St. Mary's School students on March 28. Approximately 1,000 students attended these programs.

On March 30, April 6, and April 7, Carson led tours through the flooded area of Downtown Delaware, starting and ending at the Cryder Historical Center. There were a total of 96 people who went on the tours. During the tours, Carson pointed out the blue high water mark signs that had been posted throughout downtown to show the estimated high water point. He also showed photos from the Society's archives showing the extent of the flooding.



Above left: New plaque commemorating the 1913 along the Olentangy River

Above right: Brent Carson leading a flood tour

Bottom left: High water mark on the William Street Bridge over the Olentangy

Bottom right: High water mark on the steps of St. Mary Catholic Church

(photos by Matt Kear)



Committee Reports

Membership Committee

Your membership committee hosted the 3rd Annual Volunteer Fair on Saturday, March 23. Volunteers were treated to a light lunch and a brief presentation of accomplishments. Each volunteer received a Society tote bag and new volunteers received a magnetic name badge. Special thanks to Volunteer Coordinator Susan Logan for organizing this event!

Membership opportunities were promoted and made available during the 1913 Flood Presentation at Willis Auditorium on March 25.

The Membership portion of the society's Strategic Plan has been updated and approved by the Board at the March 19 meeting.

The Society had 403 members on December 31, 2012, an extremely small increase from 2011. All 2012 members who have not renewed for 2013 have been notified by a personal phone call and encouraged to renew their membership. If you've lost your renewal form mailed in December, please use the form in the newsletter and renew now!

All visitors to the society receive a letter thanking them for visiting and encouraging them to become members.

To help us update our records and make sure mailings are received by our members, please let us know of address and e-mail address changes. Also, if you have a seasonal address, please give us that information so that mailings are not returned when away from your primary address.

Please share your experiences with family, friends and neighbors and encourage their support of the Society through the purchase of a membership. You may also purchase a gift membership for family or friends.

The membership committee is Sue Heston, Louis Foster, Jack Hilborn, Susan Logan, Brent Carson and T.K. Cellar. If you'd like to be a part of this committee, please contact T.K. Cellar at 740-816-2775 or via e-mail at tcellar@aol.com

-T.K. Cellar, Chair

Library Subcommittee

The Library Subcommittee is a subcommittee of the Education Committee. The Library Subcommittee has four members, including Jan Fleischmann, Karen Hildebrand, Paul Monks, and Susan Logan, who is serving as Interim Chair of the Subcommittee and represents the Subcommittee on the Education Committee. The Library Subcommittee meets bi-monthly on the 2nd Monday of the month.

The Library Subcommittee considers the challenges of managing the Society Library and recom-

mends policy and procedures to the Education Committee and to the Library volunteers. The items under discussion at this time include (1) a strategic plan for the Library, (2) creating a plan for the physical layout of the Library space, (3) the processing of archival collections also called manuscript collections, (4) the library collection policy as a part of the Society collection policy, (5) revising the library deaccession policy, (6) writing a description of the Library, and (7) locating a volunteer librarian to manage the Library and identifying a Chair for the Subcommittee.

In February, a grant proposal was submitted to the Ohio Historical Society for funds to support the cataloging and conservation of the Society manuscripts. Once the manuscripts are cataloged, the Society volunteers will be able to use these documents as primary source for historical research.

In early December 2012, six Library volunteers attended a 3-day workshop on cataloging in PastPerfect. The webinar was watched at the Cryder Center Library so there were no travel expenses for this educational opportunity.

Contact Susan Logan if you are interested in participating on this Subcommittee.

-Susan Logan, Interim Chair

Finance Committee

The Finance & Budget Committee works behind the scenes to handle money and investment matters and advise the Treasurer and Assistant Treasurer. The treasurer does the overall management of records and prepares monthly financial reports for the committee and the Board of Trustees on a continuing basis. The assistant treasurer codes payments and bank deposits for a contract bookkeeper who enters data in QuickBooks. Members of the committee are Jan Fleischmann (Treasurer & Chair), Mary Ann McGreevey (Assistant Treasurer), Brent Carson, Jack Hilborn, Roger Koch, Jerry Heston, Janell Kuck and Doug Wilson. If you have questions about the Society's finances, contact Jan Fleischmann via e-mail at jan8996@gmail.com.

-Jan Fleischmann, Treasurer and Chair

Newsletter Articles Are Wanted!

We want to publish articles of any length written about Delaware County history in this newsletter.

For our Fall 2013 issue, articles will be due on September 15. For our Winter 2014 issue, articles will be due on December 15.

Send your submission or your questions to info@delawareohiohistory.org.

Committee Reports

Buildings and Grounds Committee / Gardens Committee

The Buildings and Grounds Committee of the DCHS has continued to make major headway in dealing with the backlog of maintenance and improvement needs at the Cryder Historical Center this past year. As reported earlier, the Nash House Museum received a good, professional, long-term exterior paint job towards the end of 2011, and the deteriorated 1940s wood storm windows were removed and replaced with interior storms and new window shades.

In February we replaced the 70-year-old furnace in the Nash House with a modern, high-efficiency gas furnace with air conditioning and a humidifier. This will not only save considerably on our gas bill, but also will assist in the preservation of the house and its contents. Another area to receive overdue attention was the roof of the entry breezeway between the Nash House and the Library. The leak-prone, home-made, clear plastic roof panels have been replaced with a new, maintenance-free skylight unit, and a new rubber membrane roof has been installed over the entire area.

In the other major project this spring, the 40-year-old, deteriorating wood exterior doors on the Research Library building have been replaced with commercial grade, insulated steel doors. This improvement not only helps with the energy efficiency and comfort level of the building, but also greatly improves the security of our collections.

The Gardens Subcommittee, whose season of glory is upon us, is crucial in maintaining the attractiveness of the grounds of the Society's Cryder Historical Center on a continuing basis, not only by helping with periodic maintenance of the beds and plantings, but also with landscape design and plant selection. All are welcome to join us for the gardening sessions.

You can have a great influence on the DCHS mission by volunteering your skills and knowledge in caring for our buildings and their gardens. Building maintenance volunteers work with the guidance and assistance of the Buildings and Grounds Committee to preserve and maintain the Society's buildings. Some of the work is pre-planned improvements and installations, but frequently it is unscheduled maintenance work involving "handyman" skills. All skill sets and skill levels are useful, as required jobs are many and varied. Tasks can be performed by small groups

of us working together, or on an individual basis, as your time is available. When we volunteers take care of both routine and unplanned maintenance and improvement work, we save the Society thousands of dollars every year, amounting to the equivalent of a large cash donation.

The Building and Grounds Committee is currently comprised of Roger Koch (Chair), Charlton Amidon, Mike Edmonds, Jerry Heston, Tom King, Marc Rucklos, Pete Ruffing, Jim Simons, Fred Wicker and Doug Wilson. The Gardens Subcommittee volunteers are Charlotte Bay, Jan Fleischmann, Susan Logan, Donna Meyer, Joan Obusek, Bill Reitz and Dave and Teresa Staats. Contact Roger (roger3350@gmail.com) if you have handyman or gardener skills and want to help out the DCHS. We actually have a lot of fun and get great satisfaction from working together.

-Roger Koch, Chair

Education Committee

The Education Committee members are Bill Rietz, Chair of the Program Subcommittee, Benny Shoults and Maggie Webb, Co-chairs of the Museum and Exhibits Subcommittee, Susan Logan, Interim Chair of the Library Subcommittee, Brent Carson, President of the Society, Roger Koch, Vice President for Operations, and Maggie Webb, Curator of the Nash House. The Society librarian, when appointed, will be on the Committee. The Education Committee meets bimonthly on the 2nd Monday of the month.

In addition to the 3 Subcommittees, identified above and which are specified in the Society Constitution, a Collections Subcommittee has been created. Another Subcommittee is under discussion; the new committee will address the creation of programs which meet the State Education requirements for each school grade level.

The Education Committee is developing a strategic plan for education which will help the Society meet the stated mission and vision statements, and facilitating the communication between multiple Subcommittees so that the activities of these Subcommittees are meeting a common goal.

Contact Susan Logan (slogan.osu@gmail.com) if you are interested in participating on one of the Subcommittees.

-Susan Logan, Interim Chair

Thank You Members and Donors!

Third Annual DCHS Volunteer Fair Held

By T.K. Cellar

The Third Annual Volunteer Fair on Saturday, March 23, 2013, was a great success! This event is an opportunity for the Society to recognize our volunteers and also give current and prospective volunteers a brief look at all the opportunities for volunteering.

All 74 volunteers who worked last year will receive a very nice tote bag with the Society logo on it as a token of our appreciation. The volunteers at the fair received theirs and those who were not present will receive theirs later. (We also have these tote bags available for purchase.)

The following volunteer hours are underreported, as many times volunteers forget to log their hours on the log record at the Society. In addition, board members are also volunteers and often do a great deal of work from home that goes unreported.

74 volunteers recorded a total of 5,316 volunteer

hours.

16 volunteers worked between 1 – 5 hours.

23 volunteers worked between 6 – 25 hours.

16 volunteers worked between 26 – 50 hours.

7 volunteers worked between 51 – 100 hours.

8 volunteers worked between 101 – 200 hours.

4 volunteers worked more than 201 hours.

63 volunteers in the library recorded 2,795 hours.

16 volunteers in the Nash House Museum recorded

211 hours.

6 volunteers recorded 80 hours giving tours.

The Society's Board and Board committee volunteers recorded 1,360 hours.

As you can see, we are very fortunate to have many dedicated volunteers, and we are grateful to all of them. The Society has many new initiatives, and we ask all our members to consider using your gifts and talents at your Delaware County Historical Society!

Featured Item: Parlor Car Chair

In each issue of the newsletter, we feature an item contained in the Society's collection. In this issue, we are featuring a parlor car chair which was used in one of the trolley cars from the Columbus, Delaware and Marion Electric Company (also known as the C, D & M Railway). The transportation company opened in the spring and summer of 1902. The first terminal opened on April 18 and was located at the northeast corner of William and Sandusky streets. The company was promoted by John G. Webb and Lee D. Fisher. Both men had previous experience with promoting and owning railroads in the Dayton and Columbus areas. The trolley cars were 50 feet long and seated 54 passengers, and transported people between the three cities daily. The cars had solid mahogany interiors and either blue or green plush seats. The company closed on August 23, 1933, due to bankruptcy.

- Anne Frissora



Left and Above: Items from C, D & M Railway
(photos by Anne Frissora)

News and Notes from the Nash House

Wanted: Volunteers

We need your help. The Society is completely operated by volunteers, and there are always areas where we need help. There are more than two dozen ways you can help the Society by volunteering your time and talents. Many of our committees are also seeking members.

To find out how you can help, contact Susan Logan at volunteer@delawareohiohistory.org.

Also, the Museums and Collections Subcommittee is looking for a 9x12 oriental-style rug for the Gentlemen's Study in the Nash House Museum.

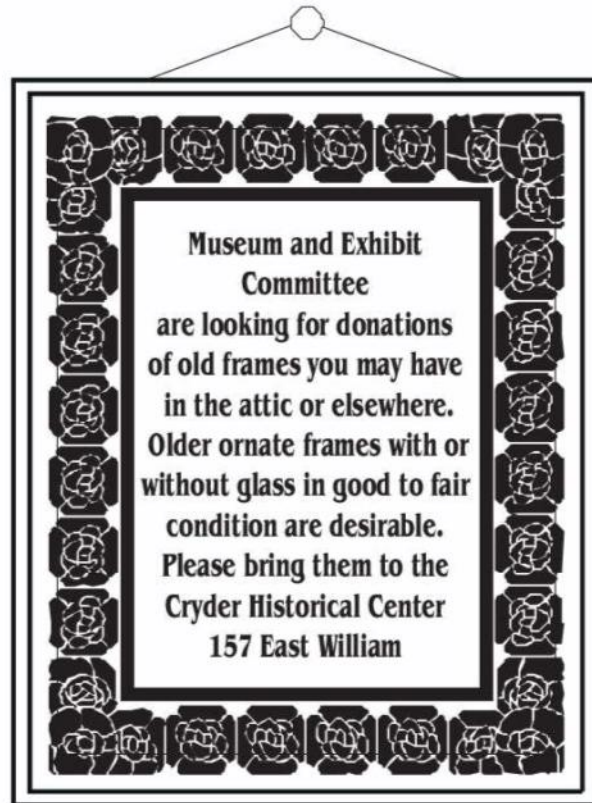
Nominations for Trustees due

Members of the Society may submit nominations for seats on the Board of Trustees. Terms are for three years, and begin at the start of the next calendar year. Society members may nominate themselves or another member by sending the nomination to the Nominating Committee, which must be received no later than September 1, 2013, to:

Nominating Committee
Attn: Bob Gerspacher
Delaware County Historical Society
P.O. Box 317
Delaware, OH 43015

or info@delawareohiohistory.org (place "nomination" in the subject line)

The Nominating Committee will evaluate all nominations and report their proposed candidates to the Board of Trustees. Election of trustees will occur at the Society's annual meeting, to be held in November at a date, time, and location to be announced later. Results will be announced at the annual meeting. The Board of Trustees may have between 15 and 18 members, as determined by the Board.



SHOP & DONATE!

When you shop at the Delaware County Community Market, 20% of your purchase goes to the charity of your choice. Why not select us? Then, every time you shop, you will automatically be supporting our mission. Simply stop by the store at 222 E. William St. and register (it's free) and choose us as your charity of choice. The Market features many products that are made by local vendors.

The
Delaware County
Community Market

*The Market carries:
produce, baked goods, soups,
sandwiches, breads, ribs, pies,
jams, jellies, sauces, honey,
eggs, soaps, lotions, candles,
framed artwork, cards, jewelry,
bird food, socks, wreaths, knit
goods & more!
The Market can cater, too!*

The Delaware County Community Market
222 E. William St., Delaware (near the liquor drive thru)
740-610-0091 or www.dccmc.com

Delaware County
Historical Society

157 E. William St.
P.O. Box 317
Delaware, OH 43015

Phone: 740-369-3831
Email: info@delawareohiohistory.org
www.delawareohiohistory.org

*Our History,
Our Heritage*

Find us on
Facebook!



Non Profit Organization

U.S. Postage Paid

Delaware, OH 43015

Permit No. 163

Return Service Requested

DCHS MEMBERSHIP FORM

Memberships received between September and December (excluding Life Memberships) expire December 31 of the following year. All memberships are "per-person" amounts, including life memberships.

Name: _____

Address: _____ Phone: _____

City, State, Zip: _____ Email: _____

Membership Status (circle one): Renew New

Membership Type

Student Membership \$5.00 _____ Life Membership (Single) \$300.00 _____

Senior Membership (60+ yrs) \$15.00 _____ Life Membership (Joint) \$500.00 _____

Adult Membership \$20.00 _____

For Student Membership, name of your school: _____ Newsletter preference (circle): Printed E-mail Both

In addition to your membership noted above, please consider an additional gift to the Society:

\$100.00 _____ \$250.00 _____ \$500.00 _____ \$1,000.00 _____

Other _____

Special Gift of \$ _____

For/In Honor or Memory of _____

Amount Enclosed: \$ _____