



# Delaware County History Courier

## Message from the Executive Director - Donna Meyer

It's finally Spring! And in the spirit of renewal, we are celebrating the season with a new schedule for the Meeker Museum. Beginning on Sunday, April 23rd, the museum located at 2690 Stratford Road will be open with the first exhibit - a display on Delaware street cars and the CD&M transportation system. We will be open from 2-5pm every Sunday and admission is free, however donations are appreciated. We have new display cases thanks to a donation from the Del-Co Water Community Fund of the Delaware County Foundation.

We are so excited to be bringing the area's premier Abe Lincoln reenactor, John Cooper to do a special free program on Thursday, April 6 at 7pm at the Barn. This is an opportunity you don't want to miss and is open to members and non-members alike (though we hope you will be so excited about the program that you will become a member) and is great for all ages.

Be sure to check out our website at [www.delawareohiohistory.org](http://www.delawareohiohistory.org) to learn about all the great programs we have planned this spring. We hope to see you soon!

## ???????? Carson's Quiz ????????

Society president and resident historian Brent Carson challenges your knowledge of Delaware area history

- Which of the following members of Abraham Lincoln's cabinet was born in Ohio?  
 A - Salmon P. Chase    B - William H. Seward  
 C - James Speed        D - Edwin M. Stanton
- What was the northernmost city serviced by the CD&M interurban railway?  
 A - Bucyrus                B - Delaware  
 C - Marion                 D - Worthington
- What year was the White House Easter Egg Roll begun, thanks to Rutherford B. and Lucy Hayes?  
 A - 1822                    B - 1878  
 C - 1881                    D - 1893



## Upcoming Events

### A Conversation with Abe Lincoln

Reenactor John Cooper will reminisce about the Civil War, politics, and life during the 1800s.

*Thursday, April 6 at 7 pm - the Barn*  
 sponsored by Fidelity Federal Savings & Loan and Hilborn Insurance

### Gardening Session at Meeker Homestead

*(2690 Stratford Road)*  
*Saturday, April 15 from 9 am - noon*

### Gardening Session at Cryder Center

*(157 E. William Street)*  
*Saturday, May 6 from 9 am - noon*

Spring preparations—optionally bring your favorite gloves and tools.

### All the Rage: Art and Fashion in Early Delaware County thru April 30

Special exhibit at the Arts Castle, 190 W. Winter St.  
*visit [artscastle.org](http://artscastle.org) for hours*

### The Delaware Chair Company

A presentation about the chairs, business history, and Delaware society from 1871 and 1930.

*Thursday, May 18 at 7 pm - the Barn*

### Letters to the Editor

Tamsen Dalrymple will share letters from a World War II European theater soldier to the editor of a small town Ohio newspaper.

*Thursday, June 15 at 7 pm - the Barn*



## Adopt-a-Garden-Bed Program

We are proud of the flowerbeds around our historic buildings at the Cryder Historical Center at 157 East William Street and the Meeker Homestead at 2690 Stratford Road. Our properties are highly visible to the public, provide pleasure for visitors and passersby alike, and convey an impression of care and importance to our historic sites. Now you too can play a part in helping us show off our gardens all summer long.

If you like flowers and playing in the dirt, you are qualified to make your own place in history! We provide knowledgeable and experienced gardeners to assist in design and plant selection and get you started in your chosen favorite planting bed, and once you are comfortable, you check up on your adopted bed regularly, on your own time schedule, and keep it beautiful and weed-free. It's a wonderfully satisfying way to express your skill and love of beautiful flowers, while helping to keep our historic buildings attractive and compelling.

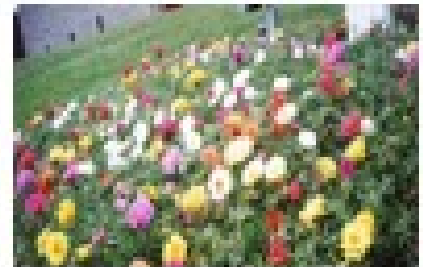
Call or e-mail Jan for an onsite walkthrough, or come to one of our scheduled cooperative gardening sessions: [jfleischmann@delawareohiohistory.org](mailto:jfleischmann@delawareohiohistory.org); 740-815-8996 (cell); 740-369-3831 (office).

Mark your calendar for one or both of these gardening sessions to join us for spring preparations:

Saturday, April 15, 9 am-noon; meet at the Meeker Homestead; optionally bring your favorite gloves, spade, trowel, loppers.

Saturday, May 6, 9 am-noon; meet at the Cryder Center to divide perennials; optionally bring your favorite gloves, spade, trowel, loppers.

Watch for further information about our mid-summer picnic, when we will enjoy and admire our efforts with an evening stroll through the gardens at the Meeker Homestead, on Sunday July 30, 6 to 8 pm.



Come join us... we would love to play in the dirt with you.



WANTED.... If you are downsizing, perhaps you have extra garden tools you might consider donating? We could use: **Hand Pruners, Loppers, Shovels, Rakes, Pruning Saws, Hedge Shears, Spading Forks.** Our volunteers can put them to good use in maintaining the gardens around our historic buildings. Contact the Office at 740-369-3831.

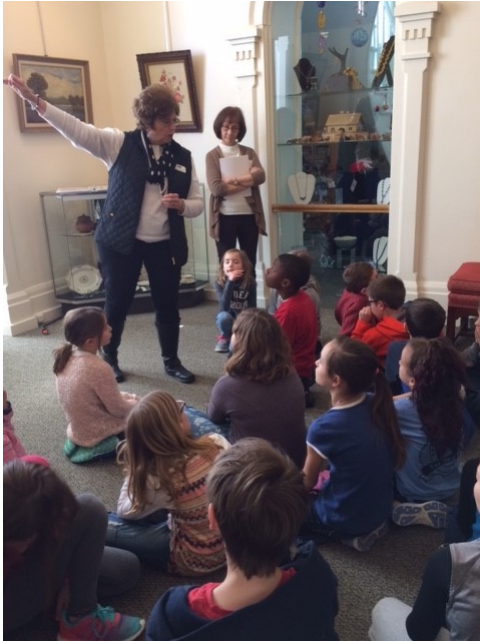
## Carson's Quiz Answers (from front page)

1. D - Edwin M. Stanton was born in Steubenville OH. Salmon P. Chase was Governor and U.S. Senator from Ohio, but was born in Cornish NH. (Come to the Abe Lincoln program on April 6 to learn more.)
2. A - Bucyrus The CD&M operated from 1903 to 1933 connecting Columbus, Delaware, Marion, Worthington, and Bucyrus, Ohio. (Learn more at the Meeker exhibit starting April 23.)
3. B - 1878 Earlier egg rolls took place on the grounds of the U.S. Capitol. Congress passed a law prohibiting the use of the grounds as a play area. On that Easter Monday in 1878, President Hayes passed by the Capitol in his carriage. He saw the children were upset because they were being kept off the Capitol grounds. President and Mrs. Hayes invited the children to the White House lawn thus starting the annual tradition. (See our rare collection of Easter eggs at the Cryder Historical Center, 157 E. William St.)

## The Delaware County Historical Society and The Arts Castle Joint Project

### ALL THE RAGE: ART AND FASHION IN EARLY DELAWARE COUNTY

The Arts Castle and the Delaware County Historical Society (DCHS) have created a shared exhibit based on the early art in Delaware. This art concept includes clothes, furniture, paintings, needlework, jewelry, children's items, lithographs and more, chiefly from the Victorian era (1800s). Paula Blosser and Mary Williams from the Arts Castle met with the Curriculum Support Committee for this project because the vision is to



have all the 3rd grade classes in the county to tour the exhibit. During the tours, DCHS volunteers will be on hand to provide context and stimulate discussion about the items from our collection. Local history is part of the 3rd grade curriculum for all Ohio schools and the Arts Castle wanted to feature the art and artists from the early years of Delaware.

DCHS volunteers Susan Logan and Maggie Webb have gathered the 80+ items selected by the Arts Castle for the exhibit. Once gathered, each item was reviewed, fully catalogued in a PastPerfect database, and evaluated for travel to the Arts Castle. The items were carefully packaged and sent to the Arts Castle. Karen Hildebrand created tour guide materials using PastPerfect to research the items and add historical background for different aspects of the fashion, art, furniture and more. Volunteers from the Curriculum Committee launched the tours with the 3rd graders on March 16. The tours will give an expected 1,200 county students an up-close look at Delaware County art and fashion.

Visit the exhibit now through April 28. For more information and open hours, visit the Arts Castle website ([www.artscastle.org](http://www.artscastle.org)).

---

## Easter Egg Collection Donated In Honor Of Hayes

*Note: This is a reprint of an article published in "the Historian" Spring 2010 issue. The collection is on permanent display at the Cryder Historical Center, 157 E. William St., Delaware, Wednesdays 10am – 5pm (closed noon to 1pm) and Sundays 2 – 5pm.*

Delaware, birthplace of Rutherford B. Hayes, has had little to show visitors who come in search of connections to the president. Both of his homes have long since been demolished. There have been virtually no items related to Hayes on display at our museum-- that is, until recently.

A rare collection of memorabilia connected to the annual White House Easter Egg Roll has been anonymously donated to the DCHS. It was believed to have been the largest privately owned collection. Now it is showcased in the museum. Jeff Burnett, a political memorabilia collector and dealer from Ashland, Ohio, has specialized in White House Easter Eggs. He believes our collection is exceedingly rare and the only known collection to be on public display. Burnett added, "Delaware is fortunate to have obtained such a treasure."

The collection includes 107 colorful wooden eggs and 43 glass eggs. Among other memorabilia donated are rare framed prints of Rutherford and Lucy Hayes from Harpers Weekly dated 1877. There is also a framed cabinet photo with an included autograph of the president.

The collection was donated in honor of President and Mrs. Hayes who started the White House Easter Egg Roll. When the donor was asked why the collection was given to the Delaware County Historical Society instead of to the Hayes Museum in Fremont or to the Smithsonian Museum in Washington, D.C., the donor said "For too long there has been little effort to promote Delaware as the birthplace of President Hayes. Perhaps this will spur others to donate items related to Delaware's history."



Delaware County  
Historical Society

2690 Stratford Road  
Delaware, OH 43015

Phone: 740-369-3831  
Email: info@delawareohiohistory.org  
www.delawareohiohistory.org

***Our History,  
Our Heritage***

**Find us on  
Facebook!**



# Help Wanted

*Are you interested in history and  
in the visual arts and design?*

Position Available

**Volunteer Exhibit Assistant**

Job Description

*Help gather, prepare, record and place items for Historic exhibits  
Participate in research and design sessions*

Qualifications

*Interested in the visual arts and design - Works well in a group  
Ability to express ideas and implement them  
Ability to lift and carry up to 30lbs to assist with placing items*

Time Commitment

*2-6 hours / month*

*Mature High School Seniors encouraged to apply*

*Interested? Contact Benny Shoults*

*Call 614-746-6918 or Email*

*bshoults@delawareohiohistory.org*

**DCHS MEMBERSHIP FORM**

Name: \_\_\_\_\_ Circle one:  New or Renewal

Address: \_\_\_\_\_ Phone: \_\_\_\_\_

City, State, Zip: \_\_\_\_\_ Email: \_\_\_\_\_

**Membership Type**

Adult Membership	\$25.00 _____	Adult Household	\$50.00 _____
Senior Membership (60 + over)	\$20.00 _____	Senior Household	\$40.00 _____
Life Membership (Single)	\$300.00 _____	Life Membership (Joint)	\$500.00 _____
Student Membership (under 18)	\$5.00 _____	Business/Organization	\$50.00 _____

Newsletter preference (circle): Printed  E-mail  Both

For Student Membership, name of your school: \_\_\_\_\_

In addition to your membership noted above, please consider an additional gift to the Society:

\$100.00 \_\_\_\_\_ \$250.00 \_\_\_\_\_ \$500.00 \_\_\_\_\_ \$1,000.00 \_\_\_\_\_ Other \_\_\_\_\_

Special Gift of \$ \_\_\_\_\_ For/In Honor or Memory of \_\_\_\_\_

Amount Enclosed: \$ \_\_\_\_\_

Make check payable to Delaware County Historical Society and mail to 2690 Stratford Road, Delaware OH 43015  
or use on-line form and pay with PayPal at [http://www.delawareohiohistory.org/?page\\_id=2](http://www.delawareohiohistory.org/?page_id=2)