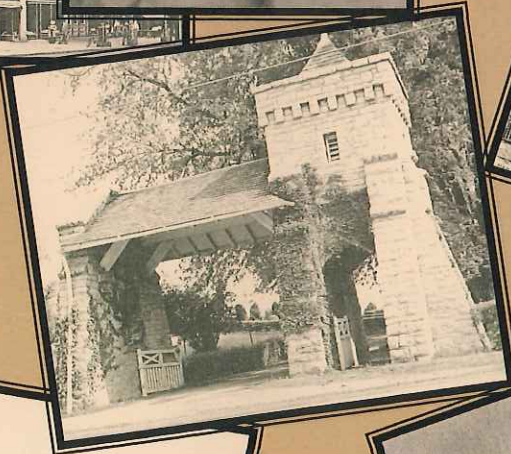
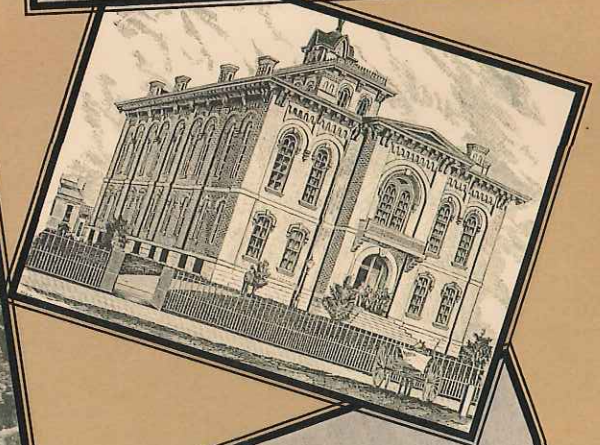
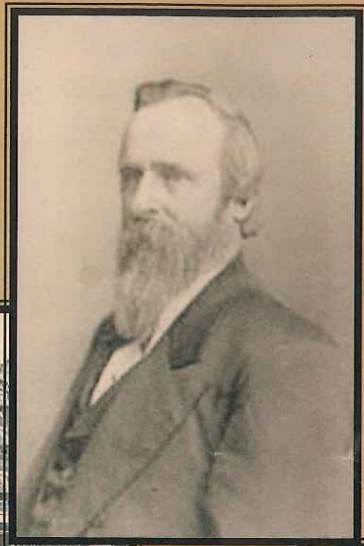


# 2014 Annual Report



**Delaware County  
Historical Society**  
*Our History, Our Heritage*



*Birth Place of Ex-President Rutherford B. Hayes.*



Dear Friends,

It is my privilege to introduce the annual report for the year 2014. In summing up our year, two words from the Delaware County Historical Society mission statement stand out, *preservation* and *education*. Our increasing volunteer base has made it possible to make great strides in preserving and making accessible the history left to our safekeeping. The cataloguing, filing, and digitizing of records has steadily increased during the year. Our Tote Bag Program, launched by our Education Curriculum Committee, has been well-received by third graders and their teachers in the classrooms of the Delaware City Schools. And, we have provided many group tours and programs throughout the year.

Looking ahead to the future, within the next 18 months, we will enter into a new and exciting phase of our growth as we occupy the historic Forrest Meeker Homestead. In preparation for this unique opportunity, earlier this year we contracted with a Columbus business consultant firm to help us create a comprehensive business plan designed to guide us towards the goal of creating an educational setting as well as an income-generating special event venue at the Meeker Homestead and Garth Oberlander Barn. We also hired Connie Hoffman, an experienced local business woman and successful events planner, to help facilitate this plan and work to make the best use of that historic and beautiful piece of property.

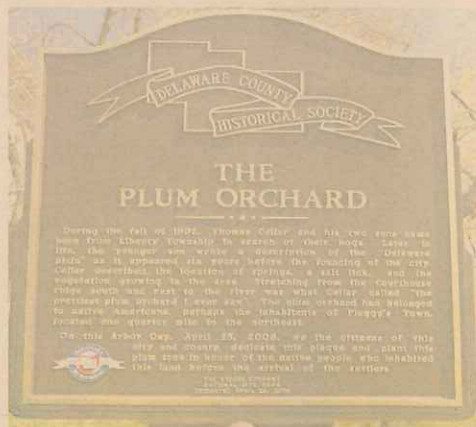
Thank you for your continued support, whether it is by financial contributions, volunteering, participating in our events or giving us suggestions and ideas. Look for exciting changes as we look forward to the future!

*Brent*

## BOARD OF TRUSTEES

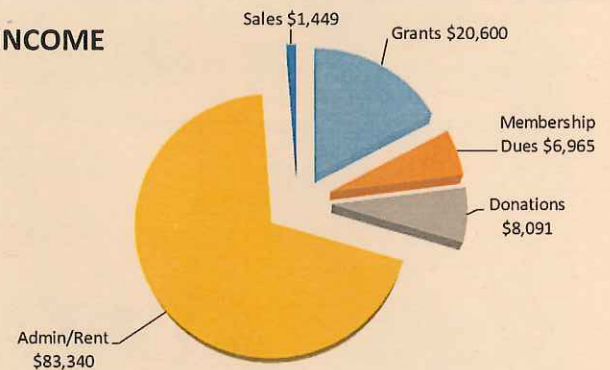
Brent Carson, President  
Jack Hilborn, Vice President of Development  
Roger Koch, Vice President of Operations  
Lynn Foreman, Recording Secretary  
Mary Ann McGreevey, Corresponding Secretary  
Jan Fleischmann, Treasurer

Charlton Amidon  
Bob Gerspacher  
Sue Heston  
Matt Kear  
Donna Meyer  
Bonnie Newland  
Steve Shaw  
Benny Shoults  
Marian Vance  
Doug Wilson



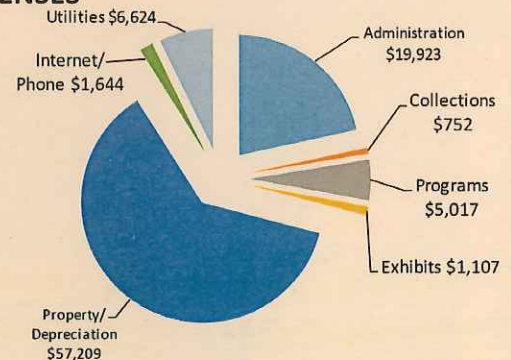
## FINANCIAL REPORT Nov. '13 - Oct. '14

### INCOME



Total Income - \$120,446

### EXPENSES



Total Expenses - \$92,277

Find us at [www.delawareohiohistory.org](http://www.delawareohiohistory.org)

### Our MISSION:

To promote and sustain interest in the history of Delaware County, through historic preservation and education.

### Our VISION:

To be a continuing, self-sustaining source of and a repository for Delaware County historical information that fosters lifelong interest through community engagement, education and historic preservation.

### We COLLECT and PRESERVE:

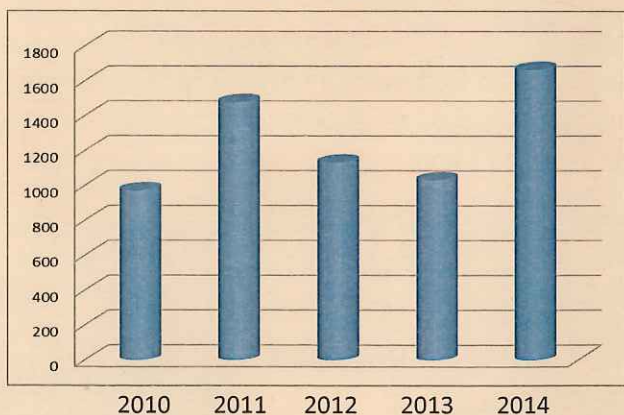
Our collections include printed materials, archives, photographs and objects, donated by individuals and organizations who believe the items are important for preserving and sharing the history of Delaware County.

In January, we completed a one year manuscript project, funded by an Ohio Archives grant. Volunteers analyzed, reboxed, and cataloged items. We now have 452 collections or individual pieces cataloged, an increase of 289 records this year. Collections include the archives of a number of local organizations, for example, the Monday Club, the Cosmopolitan Club, the Shakespeare Club; family records, e.g. the Marcus Curtiss files, the Cellar papers, the Tippet papers, and the Little papers.

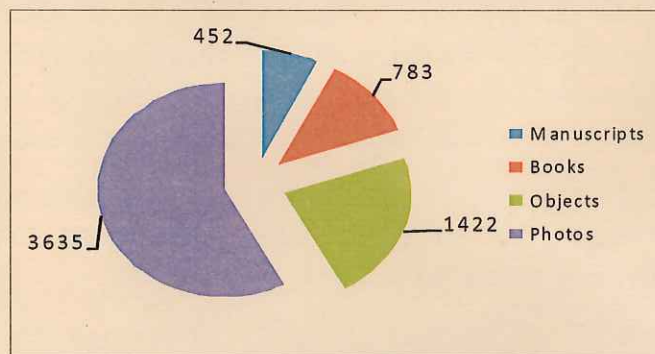
We have added nearly a thousand digital images this year for a total of 3,635. Notable photos added to the collection this year are images associated with the Nash family for which the Society Nash House is named, photos of schools and school classes, a large number of digital images from Florabel Lacher's scrapbook on the Liberty Presbyterian Church, which was loaned to us for digitizing.



Items Catalogued by Year



TOTAL Items Catalogued as of Nov. '14



### We GENERATE COMMUNITY INTEREST In HISTORY:

Since 2013, the Delaware County Historical Society has had a very visible presence in Downtown Delaware; thanks to the generosity of Steve Cianelli of the Hair Studio at 33 North Sandusky, we have a new display each month in a large display window of the Hair Studio. This venue has enabled us to reach an audience that we may have never reached before. Our past themes have included the Great Flood of 1913, promotion of Hayes High School's production of Hello Dolly using period items from our collection, an automobile theme for the downtown car show, a collection of items celebrating the Delaware County Fair and the Little Brown Jug, the Delaware Chair Company, President Kennedy's assassination, Historic Maps of Delaware, Domestic Life in the early 1900's, Christmas gifts of the past and Downtown Delaware Stores, Railroads in Delaware County, Vincente Minnelli and his roots here in Delaware, and a display on Rutherford B. Hayes. History is alive and well in downtown Delaware!

## We EDUCATE:

**Group tours and programs:** Eleven of our members have presented programs or led group tours this year. Worthy of mention is that **21** schools have benefitted from our presentations. In addition, we have presented programs and tours to civic organizations, churches, scout troops, class reunions, libraries, retirement centers, and other historical societies. In total they represent **83** separate presentations to **4,450** people.

**March 31 - Railroads in Delaware County** - Jack Hilborn shared images and discussed railway, interurban, and streetcar history in Delaware County. More than 200 individuals attended this program which the Society is planning to repeat in 2015.



**April 24 - Collecting Political History and Political Americana Projects** - Roger Van Sickle, president of the Carter Political Items Collectors Chapter and Brent Carson exhibited and discussed political memorabilia from their extensive personal collections.

**June 21 - Delaware County History – Part 1: Sunbury's Myers Inn and Powell's Martin-Perry House** - Members of the Historical Society visited the Big Walnut and Powell/Liberty Historical Societies to learn about the history of these towns.

**July 10 - Ohio Barns: Icons of our Agrarian Past** - Dan Troth, vice president of Friends of Ohio Barns and a member of the Timbers Framers Guild, discussed early agrarian practices, shared images of wooden barns and discussed the history of barns in Ohio. Mr. Troth announced the results of the dendrochronological analysis that was performed on wood samples taken from the Meeker House and the Oberlander Barn. Based on this analysis, the house was probably built in 1823 and the barn was probably built in 1848.

**August 11 - Delaware County History – Part 2: Radnor History Museum and Gallant Farm Preserve** - Sixteen members and guests of the Historical Society visited the Radnor Heritage Society's Radnor Historical Museum, and Gallant Farm Preserve, the Preservation Parks 1930's homestead located on Buttermilk Hill Road.

**August 23** - The Delaware County Historical Society hosted members of the Big Walnut, Powell-Liberty and Radnor historical societies at the Meeker House, Oberlander Barn and the Nash House.

**September 13 - 20 - The Delaware County Fair Featuring Stagecoach Stops in Delaware County** - The Society's exhibit at the Delaware County Fair featured 15 photographs of the taverns/inns that were used as stagecoach stops between 1808 and 1850. More than 2,000 fair goers visited the exhibit and 35 volunteers worked 3 hour shifts.

**October 22 - Ghost Towns of Delaware County** - Rick Helwig presented a program on his research about towns that have disappeared or nearly disappeared. Forty-five members and friends enjoyed this informative presentation.

**November 20 - Annual Meeting Program - Delaware and the Civil War** - Reenactors Henry Shaw and Rick Helwig share information about Delaware County and the Civil War.



**Coming up - December 7 (2:00 – 4:00p) Christmas at the Nash House**  
The Society invites members and the community to tour the Nash House decorated for Christmas.

## We CREATE PARTNERSHIPS:

Auglaize County Historical Society \* Barley Hopsters \* Big Walnut Area Historical Society \* Buckeye Valley Schools \* City of Delaware Council for Older Adults \* Delaware County \* Cub Scout Packs of Lewis Center, Powell, and Delaware \* Delaware Arts Festival Delaware Chamber of Commerce \* Delaware Christian School \* Delaware City Schools \* Delaware County Fair \* Delaware County Master Gardeners \* Delaware Saint Mary School \* Delaware Township \* First Fruits Homeschool Group \* Galena Historical Society Hair Studio \* Home Economists of Delaware County \* Northwest Neighborhood Association \* O.W.U. Heritage Committee \* O.W.U. History Class 250 \* Olentangy Schools \* Orange Library \* Ostrander Library \* Plains Georgia Chautauqua \* Powell Community Festival Powell Historical Society \* Preservation Parks Del. Co. \* Radnor Heritage Society \* Willow Brook Christian Communities